



## **SECTION 2**

### **ACCESSORIES**

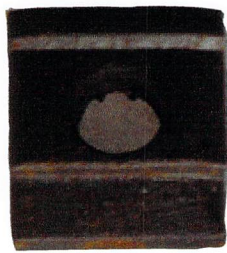
<b>Rail Clamps &amp; Rail Clips</b>	<b>11</b>
<b>Gauge Rods</b>	<b>12</b>
• Single End	
- Insulated	
- Non-Insulated	
• Double End	
- Insulated	
- Non-Insulated	
<b>Rail Anchors</b>	<b>12</b>
• Drive on	
• Snap on	
<b>Tie Plates</b>	<b>13</b>
<b>Track Bolts with Nuts &amp; Lockwashers</b>	<b>13</b>
<b>Track Spikes &amp; Screw Spikes</b>	<b>14</b>



## RAIL CLAMPS & RAIL CLIPS

Rail Clamps are designed mainly for use with heavy crane rail sections. They are furnished in sets consisting of a clamp plate and filler plate which are fabricated to match angle and thickness of rail base and to fasten rail securely.

Rail Clips are used to fasten rail in crane runway installations and in special purpose trackage. They come in a wide variety of shapes and sizes to conform to the base of all standard tee rail and heavy crane rail sections.



**Rail Clip #62**



**Rail Clip #103**



**Rail Clip #106**

Clip To Rail																		
RAIL SECTION	062	103	106	107	108	112	114	120	128	175	171	201	202	203	205	204	206	807
12# ASCE							X		X									
16#							X		X									
20#							X		X									
25#							X		X									
30#							X		X					X	X	X	X	
40#							X		X					X	X	X	X	
50#							X		X					X	X	X	X	
60#		X	X					X						X	X	X	X	
65#		X	X					X						X	X	X	X	
70#		X	X					X						X	X	X	X	
75#		X	X					X						X	X	X	X	
80#		X	X	X	X			X				X	X	X	X	X	X	
85#		X	X	X	X			X				X	X	X	X	X	X	
85# PS	X			X	X	X				X		X	X	X	X	X	X	X
85# PRR		X	X	X	X			X				X	X	X	X	X	X	
90# ASCE		X	X	X	X			X				X	X	X	X	X	X	X
90# ARA-A		X	X	X	X			X				X	X	X	X	X	X	X
90# ARA-B	X			X	X	X				X		X	X	X	X	X	X	X
100# ASCE		X	X	X	X			X				X	X	X	X	X	X	X
100# AREA	X			X	X	X				X		X	X	X	X	X	X	X
100# ARA-A		X	X	X	X			X				X	X	X	X	X	X	X
100# ARA-B	X			X	X	X				X		X	X	X	X	X	X	X
100# PS	X			X	X	X				X		X	X	X	X	X	X	X
104# CRANE	X			X	X	X				X		X	X	X	X	X	X	X
105#	X			X	X							X	X	X	X	X	X	X
105 NYC (dudley)		X	X	X	X			X				X	X	X	X	X	X	
110# AREA	X			X	X	X				X		X	X	X	X	X	X	X
112#	X			X	X	X				X		X	X	X	X	X	X	X
115#	X			X	X	X				X		X	X	X	X	X	X	X
119#	X			X	X	X				X		X	X	X	X	X	X	X
127# NYC (dudley)		X	X	X	X			X	X			X	X	X	X	X	X	X
130# PS				X	X							X	X	X	X	X	X	X
131# AREA	X			X	X	X				X		X	X	X	X	X	X	X
132#	X			X	X	X				X		X	X	X	X	X	X	X
133#	X			X	X	X				X		X	X	X	X	X	X	X
135# CRANE	X			X	X	X				X		X	X	X	X	X	X	X
136# AREA	X			X	X	X				X		X	X	X	X	X	X	X
140#	X			X	X	X				X		X	X	X	X	X	X	X
171# CRANE				X	X						X	X	X	X	X	X	X	
175# CRANE				X	X	X				X		X	X	X	X	X	X	X

Call for detail drawings



## GAUGE RODS

Gauge rods are an economical means of holding track in gauge on curves as well as in other problem areas. They are available in single end, double end 2-jaw, and double end 4-jaw styles—either insulated or non-insulated (please specify).



Double End, Non-Insulated



Double End, Single Clamp



Single End, Non-Insulated

## RAIL ANCHORS

Rail anchors bear against the rail base and tie to prevent creepage that causes undue cutting and wear. They come in drive-on or snap-on styles and are simple to apply and can be removed easily and moved to other locations.

Specify rail section and weight.



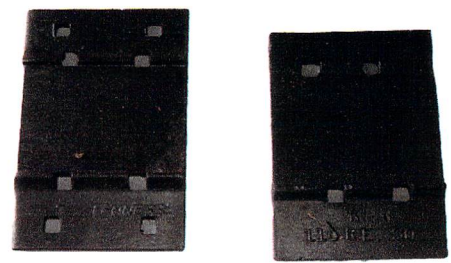
Rail Anchors



## TIE PLATES

Plates distribute the load from the rail to the ties and provide uniform bearing surface for the rail to prevent movement. They are recommended for all track using rail from 60-lb. through 140-lb. sections.

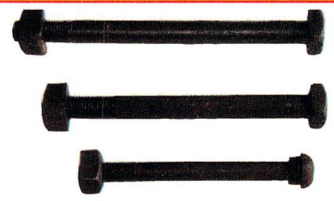
To order, specify single or double shoulder, identify rail weight and section, such as 136-lb. AREA and/or width of rail base, and size of spikes.



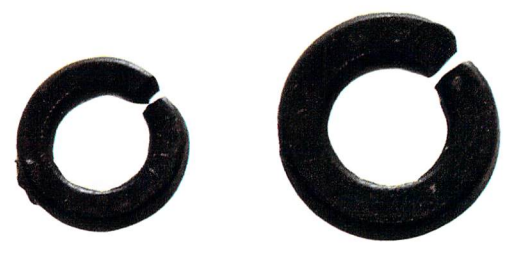
Single & Double Shoulder Tie Plates

## TRACK BOLTS WITH NUTS AND LOCKWASHERS

Frog Bolts



Track Bolt  
Specify Diameter &  
Length (see chart  
below)



Lockwashers - Specify Bolt Diameter

### Track Bolts - Button Head Oval Neck

Size	Wt./Ea.	Approximate Quantity per 200# Keg	Rail Size
1/2" x 1 3/4"	.204#	1000	
1/2" x 2"	.212#	948	16#
1/2" x 2 1/4"	.223#	901	
1/2" x 2 1/2"	.233#	858	25#
5/8" x 2 1/2"	.4#	520	30#
5/8" x 3"	.4339#	476	
3/4" x 3"	.673#	293	
3/4" x 3 1/4"	.725#	282	40#
3/4" X 3 1/2"	.7143#	272	
3/4" X 3 3/4"	.7693#	265	60#
3/4" X 4"	.7783	200	70#
3/4" X 4 1/2"	.834#	238	
7/8" X 3 1/2"	1.053#	190	
7/8" X 4"	1.124#	173	
7/8" X 4 1/4"	1.163#	168	
7/8" X 4 1/2"	1.212#	163	80#
7/8" X 4 3/4"	1.25#	160	80#, 85#, 90#
7/8" X 5"	1.274#	150	85#, 90#
7/8" X 5 1/2"	1.334#	145	90#
7/8" X 6"	1.351#	140	
1" X 4"	1.6#	124	
1" X 4 1/2"	1.667#	117	
1" X 4 3/4"	1.71#	114	
1" X 5"	1.755#	118	90#
1" X 5 1/2"	1.852#	111	100#, 115#
1" X 5 3/4"	1.887#	108	110#, 115#
1" X 6"	1.942#	103	
1 1/8" X 5 1/2"	2.44#	96	
1 1/8" X 6"	2.598#	79	132#
1 1/8" X 6 1/2"	2.667#	74	



## TRACK SPIKES AND SCREW SPIKES

Track Spike



Cut track spikes consist of a square body with a flat hook head, reinforced throat and chisel point at the end. They are manufactured in accordance with American Railway Engineering Association standards.

Track spikes are measured under the head to the cut end. Be sure size of spike conforms to weight of rail, size of holes in Tie Plate, and thickness of ties to be used when ordering.

Available in:

- 5/8" x 6", approximately 250 per keg
- 9/16" x 5 1/2", approximately 344 per keg

Screw Spike



Screw spikes are used to secure tie plates on trestles and special track installations. The square head is designed to receive a socket wrench to turn the spike into the tie.

Dome Head Timber Drive Spike



Specify diameter, length and head style (Dome or Square).

Square Head Drive Spike



## SECTION 3 APPLIANCES



<b>Blue Flags</b>	15
• Spike Type	
• Clamp	
<b>Bumping Posts</b>	16
• Shock Free Heads	
• Cushion Heads	
<b>Derails</b>	17
• Hinged or Hand Throw	
• Portable	
• Sliding	
<b>Rerailers</b>	18
<b>Wheel Chocks</b>	18
<b>Wheel Stops</b>	18

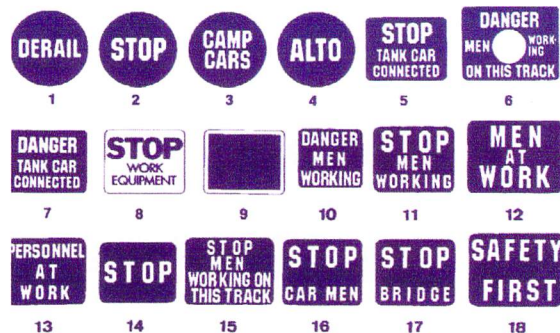




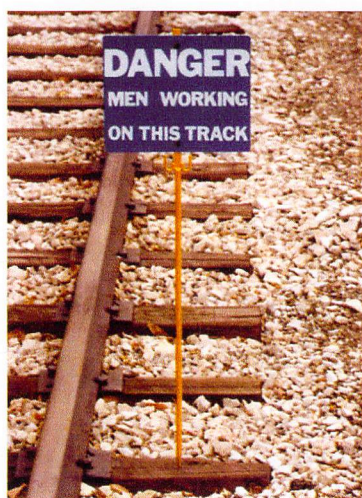
## BLUE FLAGS

These signs can be free standing or part of other railroad equipment such as derails or switches. They can be spiked to the cross ties, clamped to the rail, or driven into the ballast.

Standard signs have white letters on a blue background and a variety of messages are available and they can also be made to order.

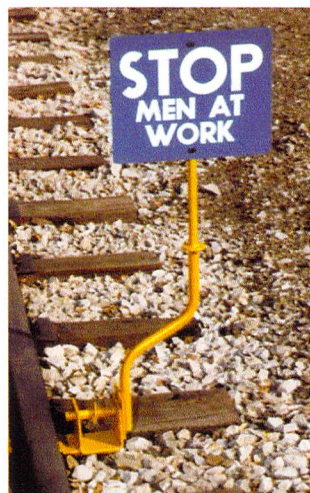


### Spike Type



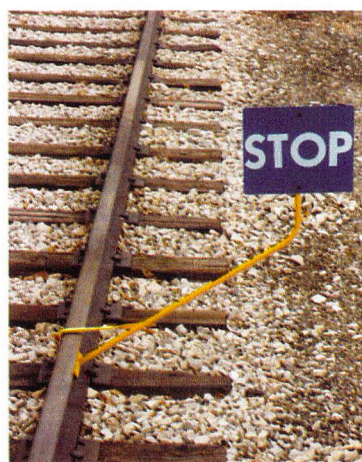
Durable Blue Flag mounted to a sharp, pointed staff for rapid setting by stabbing into tie or ground.

### Hinged

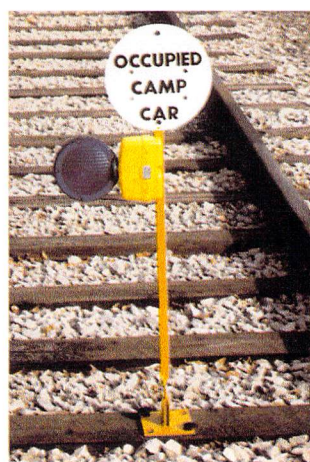


For permanent installation, the hinged design allows the flag to be laid flush with the ground when not in use. Mounted inside or outside of either rail, may be padlocked into the desired position, up or down.

### Clamp On



Gravity-lock scissor clamp holds flag securely to rail. This model is for portable use.



Tie Plate base may be spiked down or lagged to tie between rails or on either side. Hinged design enables staff to lay flush when not in use. Shown here with optional flashing blue light.

Insulated blue flag clamp-type staffs are available for use near electrified third rails.





# BUMPING POSTS

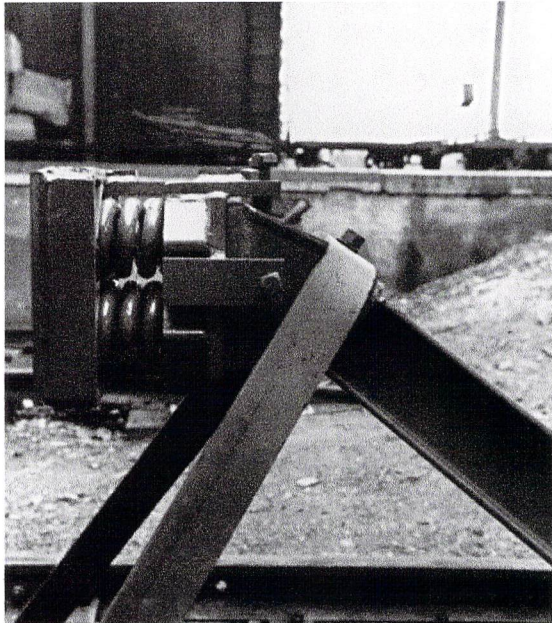


**Bumping Post (Specify Style)**  
WA, WD, WG, WK

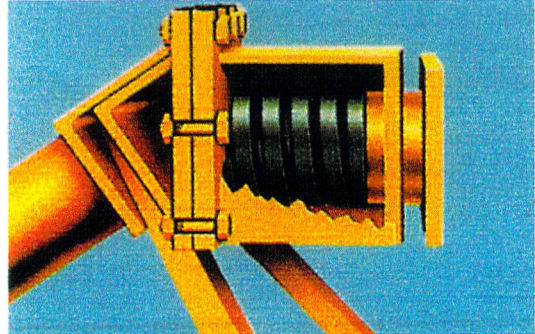


**Bumping Post**  
SBP, HDBP

## Shock-Free Heads



## Cushion Heads



# DERAILS

## Hinged or Hand Throw



Hinged Derail



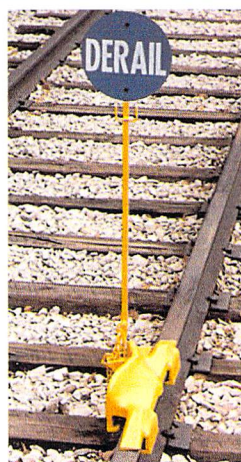
Hinged Derail with Blue Flag

Hinged Derails can be easily thrown on or off the rail by hand to guide car wheels off the rail smoothly and safely. They can be used in right-hand or left-hand positions, can usually be padlocked in open or closed positions, and can have various blue flags attached if desired.

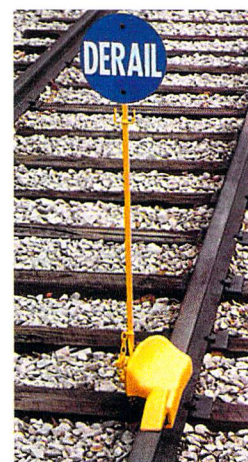
Specify rail weight and hand or double end.

## Portable

Portable Derails are available in double end and single end models and require no spiking. Their unique wedge type clamps allow you to lock them down securely to the rail. They also come with blue flags. Specify right or left when ordering. Portable derails have convenient carrying handles and fit all 80 - 133 lb. rail sections.



Double-End, Portable Derail with Flag



Single-End, Portable Derail with Flag

## Sliding



Sliding Derail

Sliding Derails can only be thrown by an operating stand. This assures safe operation and eliminates accidental positioning by passing equipment.

Specify rail weight and hand or double end.

## Operating Stands

Operating stands are used with Derails to throw the derail on or off the track.



HB Derail Operating Stand



## RERAILERS

The Butterfly Rerailer is designed for mine, quarry, and industrial applications. The special guide groove design permits rerailing wheels from either or both sides simultaneously (it is used in pairs, right and left).



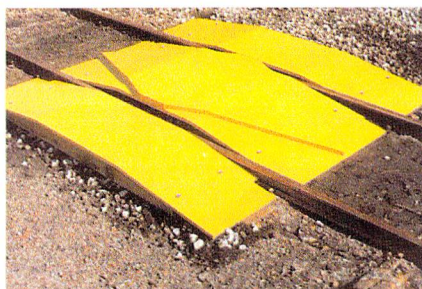
Butterfly Rerailers

The SW Rerailer can be spiked to the tie or clamped to the rail. It is easily and quickly installed for general use.



Model SW Rerailer

The Permanent automatic rerailer is used in loading areas where constant spillage makes staying on the tracks difficult or where a derailed car might cause damage to other equipment. It guides the wheels to the rail and helps keep them in place.



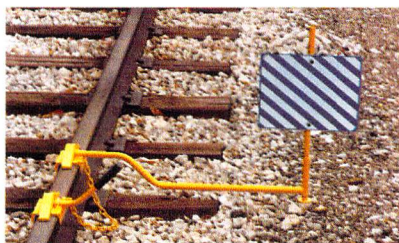
Permanent Rerailer

## WHEEL CHOCKS

Chocks assure a safe and secure blocking for standing cars. They are easily installed by placing on the rail and pushing against the standing wheel. They come in single or double with blue flags, handles, or chains if desired.



Single Wheel Chock with Handle



Double Wheel Chock with Blue Flag



Single Wheel Chock with Blue Flag



Double Wheel Chock with Chain

## WHEEL STOPS

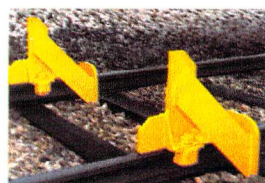
Wheel Stops are installed at the end of the tracks to prevent cars from running off the end. They can sometimes be used instead of Bumping Posts.



SF Wheel Stop



SG Wheel Stop



CCS-2 Wheel Stop



CS-50 Wheel Stop

